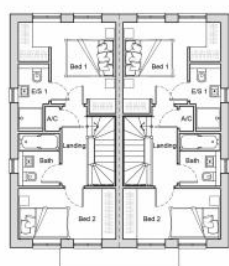


115 Feltham Hill Road - proposed layout plan



Proposed elevations Plots 4 and 5



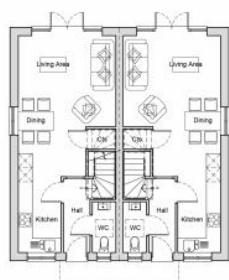
First Floor Plan



Front Elevation



Side Elevation



Ground Floor Plan

Plot 4 - 2039 sqm (2039 sqm) - 78.3m² (821m²)



Rear Elevation



Side Elevation

Previously refused scheme 07/00689/OUT (for 7 dwellings)

